
PLACE FOUNTAIN WHERE?

**That is Question Service Board is
Trying to Settle to Their
Satisfaction.**

Supt. Ricksecker of the Humane society yesterday had a talk with President Springborn and Member Leslie of the board of public service relative to the locating of the drinking fountain donated to the Cleveland society by the National Humane alliance.

Ricksecker suggested that the fountain, monumental in nature, be placed at the junction of Superior and Payne-avs. in a little plot of ground owned by the city.

0

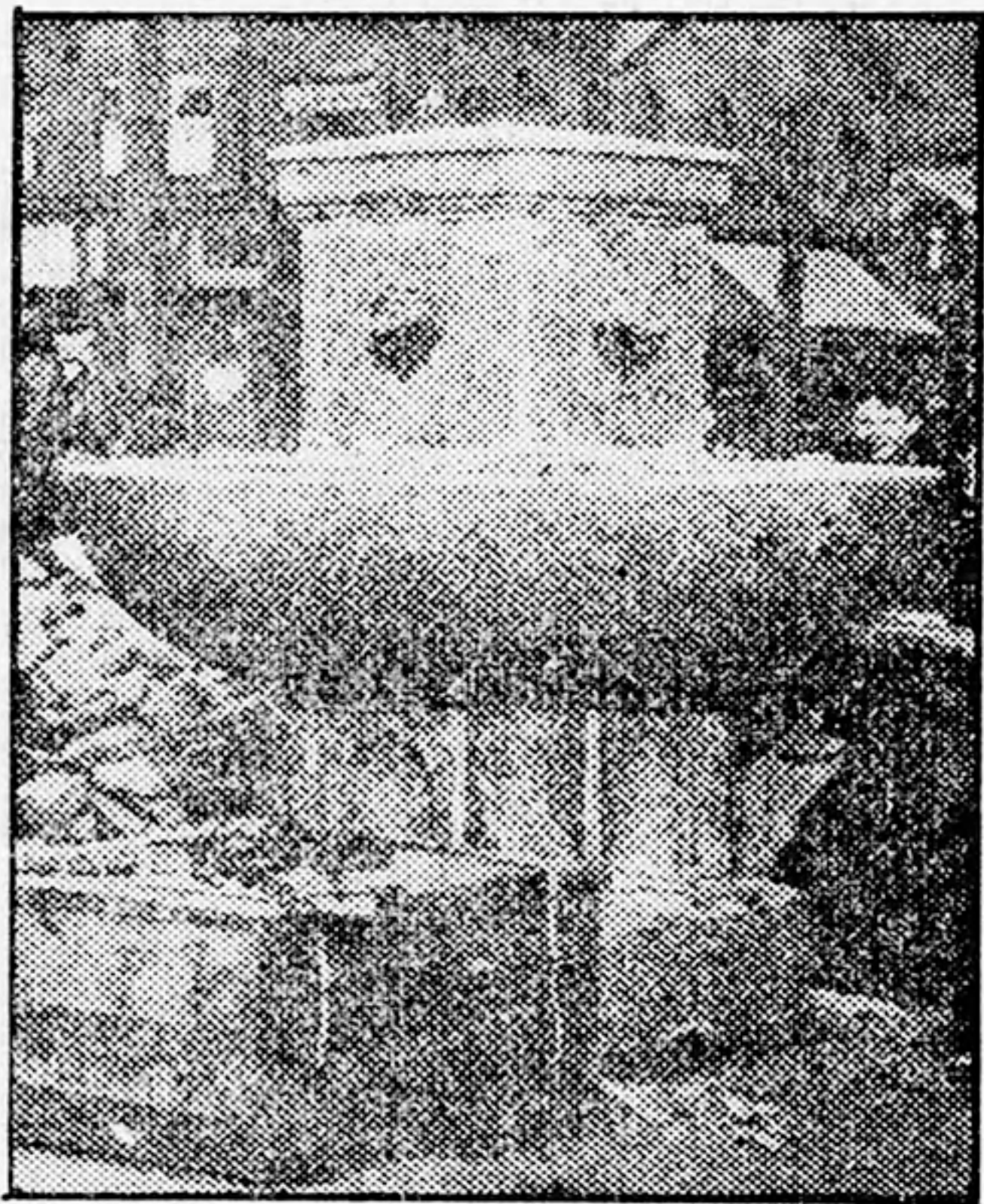
SITE FOUND FOR FOUNTAIN.

**Plot at Superior and Payne-avs.
Given by City for
Purpose.**

President Springborn of the board of public service in a letter to Humane Agent Ricksecker yesterday, gave permission for the erection of the fountain donated by the National Humane alliance in the plot of ground at the intersection of Payne and Superior-avs., N. E.

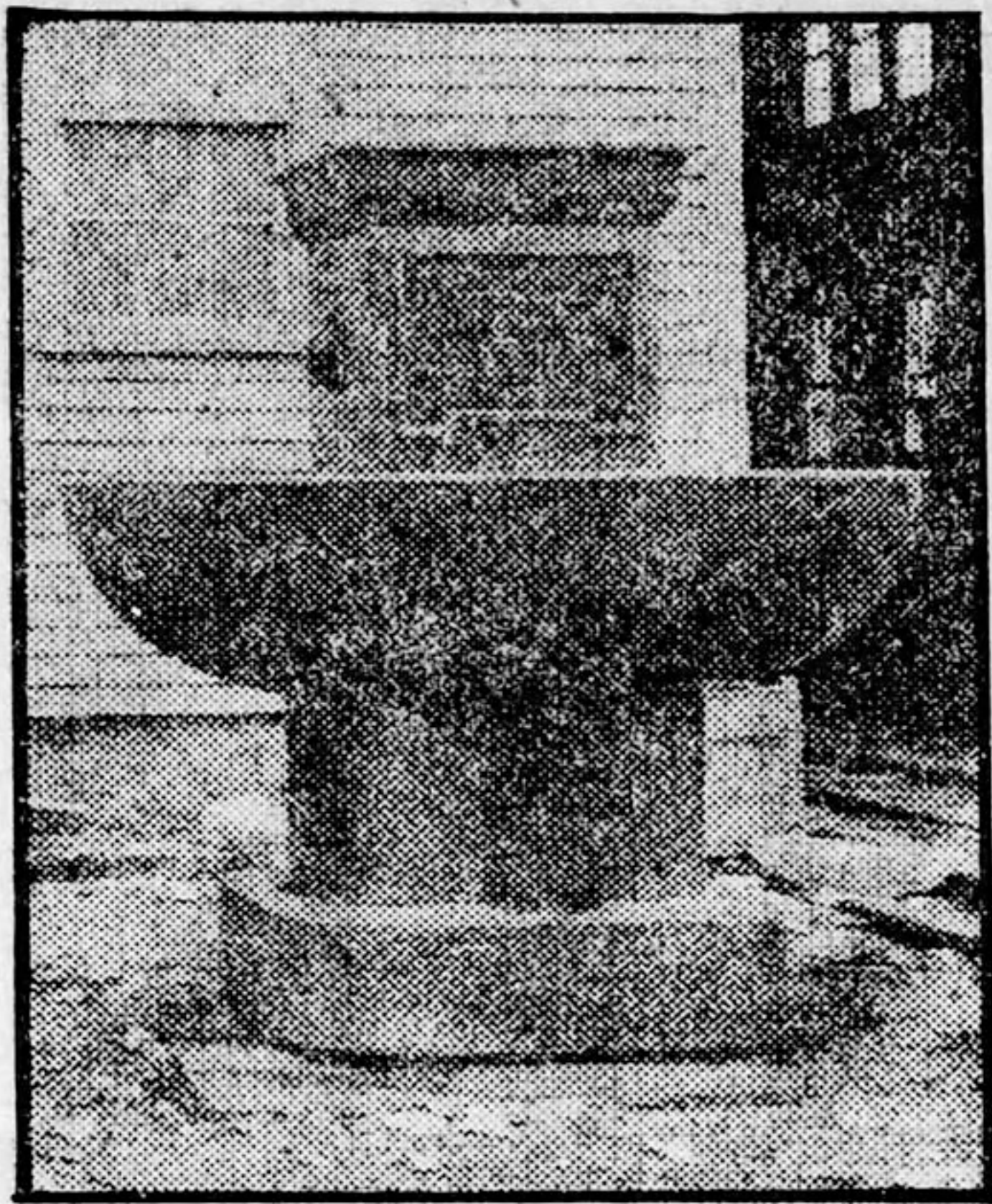
Springborn gave the required permission after City Solicitor Baker had decided that the city had a clear title to the ground.

SETTING NEW FOUNTAIN.



The fountain donated the city by the National Humane alliance, now being erected at the intersection of Payne and Superior-avs., will soon be ready for use. The fountain is entirely of granite and is of considerable artistic beauty.

MERCY FOR ANIMALS.



Drinking fountain for horses and dogs presented to the city of Cleveland by the National Humane alliance.

FOUNTAIN IS LARGELY USED.

**Many Horses Quench Their Thirst
in a Day.**

At the fountain at Superior and Payne-avs. an average of 700 horses a day are watered.

The information has been secured for the benefit of the National Humane alliance, donators of the fountain to the city. The city wants the alliance to give another similar fountain to be located in or near Library park on the West side.

City Wants Another Fountain.

President Springborn has asked the National Humane alliance to give to the city another drinking fountain such as is located on Superior-av. at E. 12th-st. The society has promised to consider the application.