

A stone fountain with a large, shallow, bowl-shaped basin. The fountain is made of grey granite. At the top is a square pedestal with a decorative top. On the front face of the pedestal is a plaque with text and a lion's head sculpture on the left. The fountain is set on a concrete base with a drain. The background shows a brick building, trees, and a street.

1907
PRESENTED BY
THE NATIONAL
HUMANE ALLIANCE
HERMON LEE ENSIGN
FOUNDER



The National Humane Alliance Fountain (left) has stood in the street at the corner of Eighth Street and Phillips Avenue.

Fountain at Eighth, Phillips once served horses in street

Editor's note: In this weekly column, we showcase historic features of Sioux Falls through old photographs and Eric Benshaw's descriptions. We welcome old photos or ideas for future columns. Email photon@karpublishers.com.

Between 1905 and 1911, the National Humane



ERIC BENSHAW
Looking South

stands at the corner of Eighth and Phillips, where it has for years.

This pleasant fountain had a more utilitarian purpose in the day when it was donated — to keep horses and small animals of the city hydrated. To meet this purpose, this fountain was originally constructed in the street at the corner of Ninth and Phillips, the busiest corner in the city at the time. The large bowl at the top was for horses, while the four

smaller bowls at the bottom were meant for dogs, or perhaps very small horses. The commemorative plaque on our fountain reads:

1907
Presented by
The National
Humane Alliance
Hermon Lee Ensign
Founder

Hermon Lee Ensign was a journalist, investor and author who wrote about the domesticated animals he loved. His love of animals was such a big part of his life that he founded The National Humane Alliance in 1896. The goal of the

alliance was to educate the general public in the kind treatment of animals.

Ensign died in 1899, and most of his fortune was donated to his alliance. The organization used at least some of this trust to create 125 fountains like the one in downtown Sioux Falls. The other 5-ton polished granite fountains in South Dakota is in Beverly and Main in Rapid City. Every state or territory in the union at the time got at

least one, except Arizona and West Virginia. Alaska and Hawaii were way too late to get in on this.

Sioux Falls' fountain has stood at the southwest corner of Eighth and Phillips for as long as anyone can remember. In the 1950s, the bottom pool would be full of change most of the time. The city would collect this money periodically to use for charitable projects, and the children in the area would respect this purpose for the most part and leave it alone.

Our fountain has had some work done in the past 10 years; it was disassembled, cleaned up, re-plumbed and put back in working order. It still works well for a piece of art more than 100 years old. It doesn't water nearly as many horses as it used to, but to be fair, they don't come around the downtown area as often.

Ensign's legacy lives on owing to his generosity and kindness to animals.

Eric Benshaw of Sioux Falls has written the book "Repopulation of South Dakota" and gives a history of population change for the entire Great Plains from 1700 to 2000.



The National Humane Alliance Fountain (now located on the southwest corner of Eighth Street and Phillips Avenue, 801 1/2 SOUTH BRIDGLAND)

HANDSOME FOUNTAIN

National Humane Alliance Makes Generous Offer to Sioux Falls

Will Donate Free of Cost a Handsome Drinking Fountain Made of Granite and Bronze

If the efforts of S. M. Bear, president of the State Humane society, are crowned with success, as now seems almost certain, Sioux Falls will in the near future be one of the twenty-five cities in the country to enjoy one of the handsome National Humane society fountains, the gift of the National Humane Alliance.

Mr. Bear has for some time been in correspondence with the National Humane Alliance relative to one of these elegant combination horse and dog fountains, and a day or two ago received the following letter, which explains the situation exactly:

"The United Humane Alliance, United Charities Building, New York City, Feb. 26, 1907.—My Dear Mr. Bear: The attached refers to the fountain such as the National Humane Alliance donates to certain cities directly through the auspices of local humane societies, civic clubs and leagues

"The fountains are of Maine granite entirely polished and trimmed with bronze. They are in five pieces, total weight five tons, height 6 feet 8 inches, diameter of large bowl 6 feet, cost about \$1,000.

"They are delivered without charge, freight prepaid, under the following requirements from the cities receiving them, viz: That city authorities shall express a desire on the part of their city to receive such donation, and shall offer a fountain site acceptable to the National Alliance, which must be located where there is a large passing traffic, and so that the fountain can be approached from all sides. The city must agree to take the fountain from the car, putting in good water connections (plumbing), and guarantee continuous water supply, and proper, permanent care. A setting plan goes with each fountain, giving foundation and other measurements.

"Sincerely,
—Lewis Mead Seaver,
"Secretary."

Mr. Bear has conferred with Mayor Ellsbury in regard to the acceptance of the fountain, and it is likely that the mayor and city council will be prevailed upon to make the official request necessary to procure it. In looking about for a site Mr. Bear thinks that the foot of Ninth street, the present back stand, would be the proper place, as there is more travel by team past that point than any other place in the city.

A picture of the fountain accompanied the letter so Mr. Bear, which shows that it is a substantial structure.

Sioux Falls - Argus-Leader 1907-03-05

Clipped By:



derbyct

Wed, Mar 7, 2018

Water Works Park Infant Among Areas Comprising City's System

Twenty Acre Tract Surrounding Filtration and Pumping Stations Quietly Beautified During Past Year — Already Has Good Growth of Ash and Elm

Announcing the arrival of a new baby to Miss Sioux Falls—perhaps to Mother Sioux Falls would sound better. The baby has been inspected by several of the local service clubs and has been pronounced a healthy youngster full of promise and one to be watched with interest.

The baby has been named Water Works park and it surrounds the filtration and pumping stations. It is 20 acres in extent and already has a good growth of elm and ash.

Roadway Is Artistic

For the past year work has been going quietly on improving the grounds, adding a touch here and there, and making the area attractive and inviting.

First of all a graveled and graded roadway in artistic curves was put in leading from Minnesota avenue through the grounds north to the city limits. Curbing has been installed, adding beauty to the roadway. Adjoining the filtration plant and the pumping plant, a lawn has been planted and this year a large flower bed has been planted and is in the height of bloom. Window boxes with flowering plants of various kinds adorn the east side of the building.

Humane Fountain Set Up

To the south and west of the buildings are large areas well suited to picnic purposes. Park benches and tables have been set out in the groves. The areas are well kept and in excellent shape.

About 20 years ago, the National Humane Alliance presented to the city a large granite water fountain which was set at the foot of Ninth street for the use of horses and dogs. When the paving was put in and the number of horses diminished, the fountain was taken out and laid aside. A short time ago this fountain was reclaimed and is now in use in Water Works park. This fountain has been set in a concrete basin. About four feet from its base there is a large bowl shaped basin into which the water plays from the fountain at the top of a square shaft. The water plays over this shaft into the rock basin and from there into the concrete basin.

Set in Shade of Trees

On the east side of the upper shaft is the inscription "1907 Presented by the National Humane Alliance, Herman Lee Ensign, founder." The fountain is set in the cool shade of a group of elm trees. The picnic areas are well shaded by elm and ash trees and the whole presents a most inviting place.

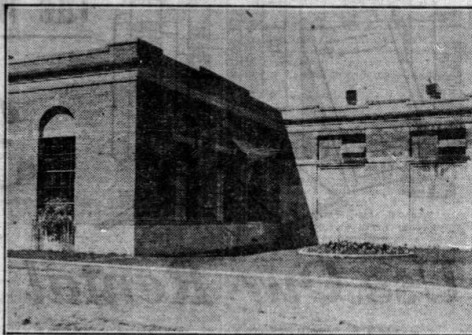
Water Works park has been built at no cost to the taxpayers of the city. The work has all been done by members of the water department. What expense there has been has been met by the department from its revenues and there has been no expenditures from the moneys raised by taxation.

Electric Stove Installed

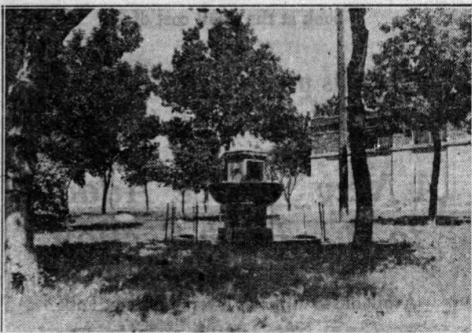
The water department has made the park as attractive as possible. There is an abundance of water available. A cordial invitation has been extended by the department to the general public to use the park for picnics whenever and as often as desired. The department has installed a large electric stove



A shady picnic area.



Flower beds and window boxes add color to the park.



Water plays over the Humane association fountain re-erected in the park. which is available for the use of picnic to the public to visit the electric and parties. water department at any time of the day. Visitors will be shown through

Sioux Falls Fountain move 1927

Clipped By:



derbyct

Sun, Nov 10, 2019